

SENTIDO

SENTIDO KHAO LAK ++++
Khao Lak, Thailand



HIGHLIGHTS

- Dream holiday in a tropical paradise with first-class service
- Located directly on the sandy beach, surrounded by natural beauty
- Modern adults-friendly hotel in a dream location
- Pure relaxation for couples
- Fresh, creative cuisine
- First-class service
- Evening entertainment in a relaxed atmosphere
- Sport to burn off energy and relax
- Feel-good wellness

LOCATION

PLACE

- Khao Lak

LOCATION

- Directly on the long sandy beach of Khao Lak in a small bay surrounded by beautiful nature
- Phuket International Airport approx. 80 km, journey time: approx. 90–100 minutes (transfer time may vary)
- City centre/town centre Khao Lak Center approx. 500 m
- Sights Khao Lak Lam Ru National Park approx. 600 m, journey time: approx. 5 minutes

FACILITIES

- National category: 4 stars
- Number of accommodation units: 214
- Hotel opening: 2012, last renovation: 2023
- Check-in time from 15:00, check-out time until 12:00 (late check-out: for a fee, reservation required)
- 24-hour reception: daily, languages: German, English, currency exchange possible
- Air-conditioned lobby, check-in/out waiting lounge
- 2 Restaurants: 1 Buffet and 1 à la carte restaurant (international, Thai, gluten-free dishes and seasonal dishes)
- 5 swimming pools, including a whirlpool (all outdoor/freshwater, sun loungers and parasols free of charge)
- 3 Bars: Swim-up pool bar, lobby bar, beach bar
- Internet: WIFI throughout the hotel (complex): free of charge
- Luggage room, laundry service, room service, bureau de change
- Excursions and tours
- Car hire, airport transfer service, taxi service
- Non-motorised water sports activities
- Car parking, (subject to availability), unguarded: free of charge
- Bath towels: free of charge
- Payment methods: VISA, MasterCard, American Express
- Pets not allowed



ROOMS

The Sentido Khao Lak offers 214 rooms in different room categories.

BOARD

BREAKFAST:

- daily 07:00 am – 10:30 am, continental, American, buffet
- Drinks: selected non-alcoholic/alcoholic drinks: daily 12:00 – 22:30 (for a fee)

HALF BOARD:

- Breakfast, choice of lunch or dinner, gala dinner,
- Lunch: daily 12:00 – 15:30, buffet or choice of menu (3-course menu) OR
- Dinner: daily 18:00 – 22:00, theme evenings: several times a week, buffet or choice of menu (3-course menu)
- Drinks: selected non-alcoholic/alcoholic drinks: daily 12:00 – 22:30 (for a fee)

FULL BOARD:

- Breakfast, choice of lunch or dinner, gala dinner,
- Lunch: daily 12:00 – 15:30, buffet or choice of menu (3-course menu)
- Dinner: daily 18:00 – 22:00, theme evenings: several times a week, buffet or choice of menu (3-course menu)
- Drinks: selected non-alcoholic/alcoholic drinks: daily 12:00 – 22:30 (for a fee)

ALL INCLUSIVE:

- Breakfast, choice of lunch or dinner, gala dinner,
- Lunch: daily 12:00 – 15:30, buffet or choice of menu (3-course menu)
- Dinner: daily 18:00 – 22:00, theme evenings: several times a week, buffet or choice of menu (3-course menu)
- Drinks included: selected non-alcoholic/alcoholic drinks: daily 12:00 pm – 10:30 pm
- Cakes/pastries and coffee/tea in the afternoon: daily 3:00 pm – 5:00 pm included

SPECIALS:

- Gala dinner: weekly, free of charge
- Christmas special: buffet, entertainment programme, New Year's Eve special: buffet, entertainment programme

SPORTS & WELLNESS

SPORTS & ENTERTAINMENT INCLUDED (PARTLY EXTERNAL PROVIDERS)

- Daytime and light evening entertainment, e.g. with parties and live music, several times a week
- Daytime activities, several times a week, such as culinary events, typical local activities (e.g. language course, cookery course, etc.)

- An
- Ad
- Fitr
- Sp
- Wi
- Fitr
- Aq
- bac
- Be
- WELLN
- We
- lan
- tre
- Ma
- ma

ROOM TYPES



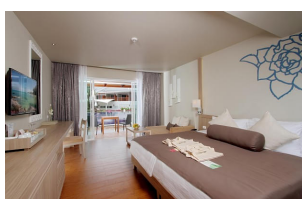
DELUXE ROOM GARDEN WING

Double room, non-smoking room pool view, garden view, approx. 44 m², total number of rooms in this room type: 1, layout as follows: combined living/bedroom, air conditioning, individually adjustable, floor: Tiled floor, safe, sofa, desk, refrigerator, coffee/tea maker, mini-bar: water, telephone, WiFi, TV: flat screen, in bedroom, German programme, Deutsche Welle, satellite TV, cleaning service: daily, bathtub or shower, WC, bathrobe, slippers, bathroom separated by glass wall, hairdryer, make-up mirror, balcony: with seating area



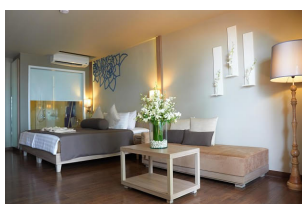
DELUXE ROOM MOUNTAIN WING

Double room, non-smoking room view of the hillside, approx. 44 m², total number of rooms in this room type: 1, room layout: combined living/bedroom, air conditioning, individually adjustable, floor: Tiled floor, safe, sofa, desk, refrigerator, coffee/tea maker, mini-bar: water, telephone, internet: WiFi, TV: flat screen, in bedroom, German programme, Deutsche Welle, satellite TV, cleaning service: daily, shower, WC, bathrobe, slippers, bathroom separated by glass wall, hairdryer, make-up mirror, balcony or terrace: with seating area



DELUXE ROOM POOL ACCESS

Double room, non-smoking room pool view, approx. 44 m², total number of rooms in this room type: 1, layout as follows: combined living/bedroom, air conditioning, individually adjustable, floor: Tiled floor, safe, sofa, desk, refrigerator, coffee/tea maker, mini-bar: water, telephone, internet: WiFi, TV: flat screen, in bedroom, German programme, Deutsche Welle, satellite TV, cleaning service: daily, shower, WC, bathrobe, slippers, hairdryer, make-up mirror, terrace: with loungers, with seating area



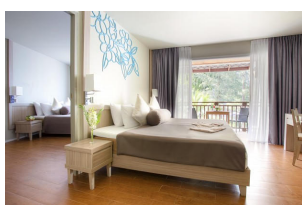
DELUXE BUNGALOW BEACHFRONT GARDEN WING

Bungalow, non-smoking room sea view, approx. 43 – 45 m², total number of rooms in this room type: 1, layout as follows: combined bedroom/living room, air conditioning, individually adjustable, floor: laminate, safe, sofa, desk, refrigerator, coffee/tea maker, minibar: water, telephone, WiFi, TV: flat screen, in bedroom, German programme, Deutsche Welle, satellite TV, cleaning service: daily, separate shower, bathtub, WC, bathrobe, slippers, hairdryer, make-up mirror, terrace: with loungers, with seating area



DELUXE BUNGALOW

Bungalow, non-smoking room, minimum age in room: 1 year pool view, garden view, approx. 52 m², total number of rooms in this room type: 1, layout as follows: combined bedroom/living room, air conditioning, individually adjustable, floor: Tiled floor, safe, sofa, desk, refrigerator, coffee/tea maker, mini-bar: water, telephone, WiFi, TV: flat screen, in bedroom, German programme, Deutsche Welle, satellite TV, cleaning service: daily, separate shower, bathtub, WC, bathrobe, slippers, hairdryer, make-up mirror, terrace: with seating area



DELUXE CORNER ROOM

55 m², king/single bed, air conditioning, balcony, bathtub, bathrobes available, cable/satellite TV, desk, refrigerator, hairdryer, bed linen and towels available, mini-bar, non-smoking room, room service, safe, separate shower, shower over bathtub, tea/coffee making facilities, telephone, TV, view, wireless internet, 220 V socket, free WiFi in room, free drinking water, slippers, hot/cold water, bathroom amenities, closet/wardrobe, daily maid service



DELUXE BEACHFRONT BUNGALOW MOUNTAIN WING

Bungalow, non-smoking room sea view, approx. 43 – 45 m², total number of rooms in this room type: 1, layout as follows: combined bedroom/living room, air conditioning, individually adjustable, floor: laminate, safe, sofa, desk, refrigerator, coffee/tea maker, minibar: water, telephone, WiFi, TV: flat screen, in bedroom, German programme, Deutsche Welle, satellite TV, room service: daily 11:00 am – 11:00 pm, for a fee, cleaning service: daily, free of charge, separate shower, bathtub, WC, bathrobe, slippers, hairdryer, make-up mirror, terrace: with loungers, with seating area